

FOR LEASE

DRUMHELLER BUILDING

102 S 2ND AVE. WALLA WALLA, WA



Rare Retail/Office Space in Historic Downtown Walla Walla 1,473-1,837 sq. ft. Space Available

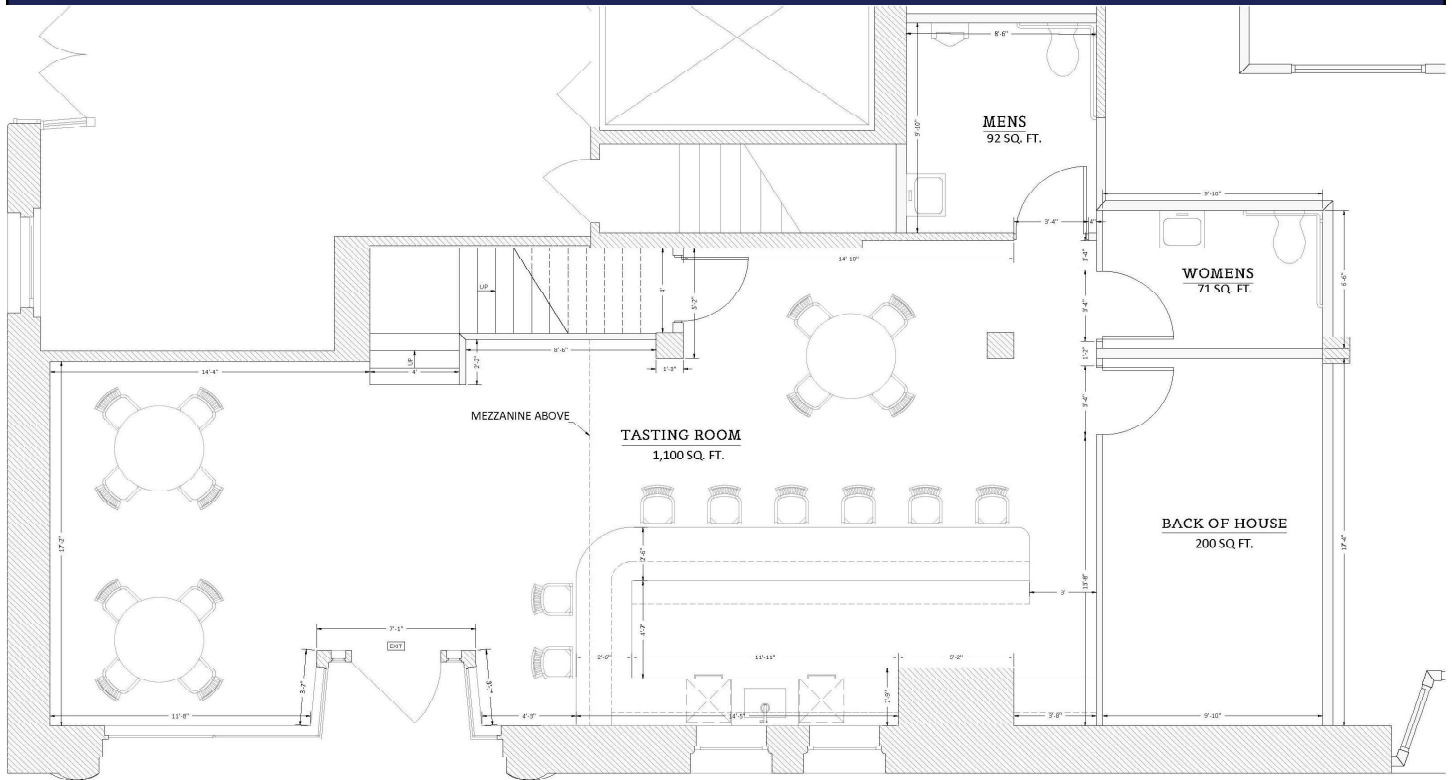
- Centrally Located
- Storefront Facing 2nd Ave
- Lots of Foot Traffic on Busy Intersection of 2nd Ave. & Alder St.
- Ample Parking - On-street 2-Hour Parking + 1 Block From All Day Free Parking Lot
- Original Hardwood Flooring
- 16' Tin Ceilings
- Optional Mezzanine Area Available for Additional 364 sq. ft. of space



Drew Davis
509.386.0000
ddavis@tarragon.com

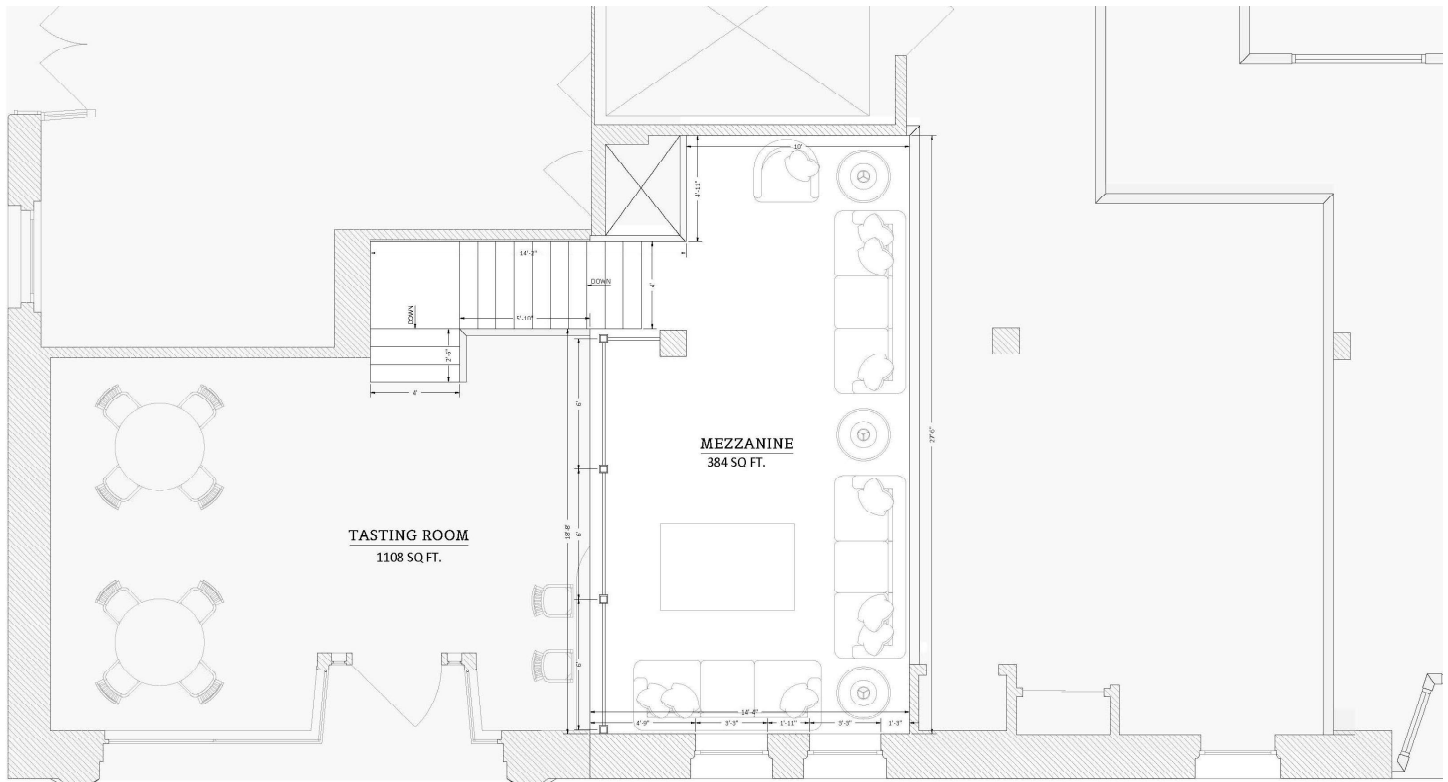
www.tarragonnorthwest.com

CONCEPT LAYOUT



TASTING ROOM LAYOUT

8/18/2022



TASTING ROOM MEZZANINE LAYOUT

8/18/2022